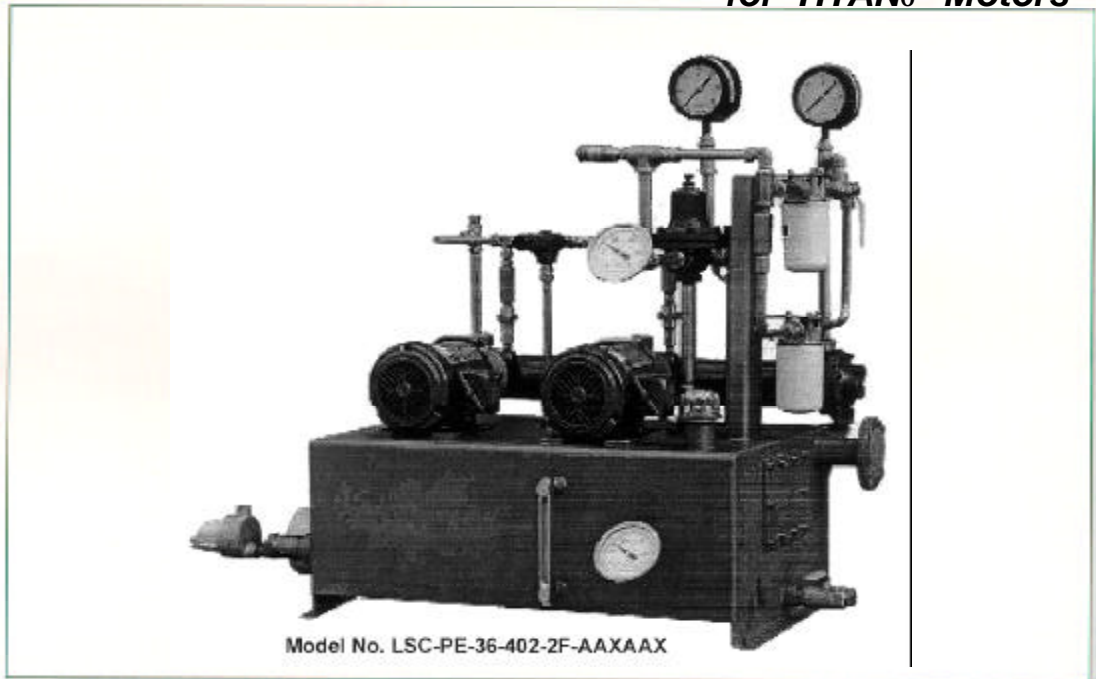


Product Data Sheet

Horizontal TITAN® Line A.C. Motors *Pre-engineered Lube Oil Systems for TITAN® Motors*



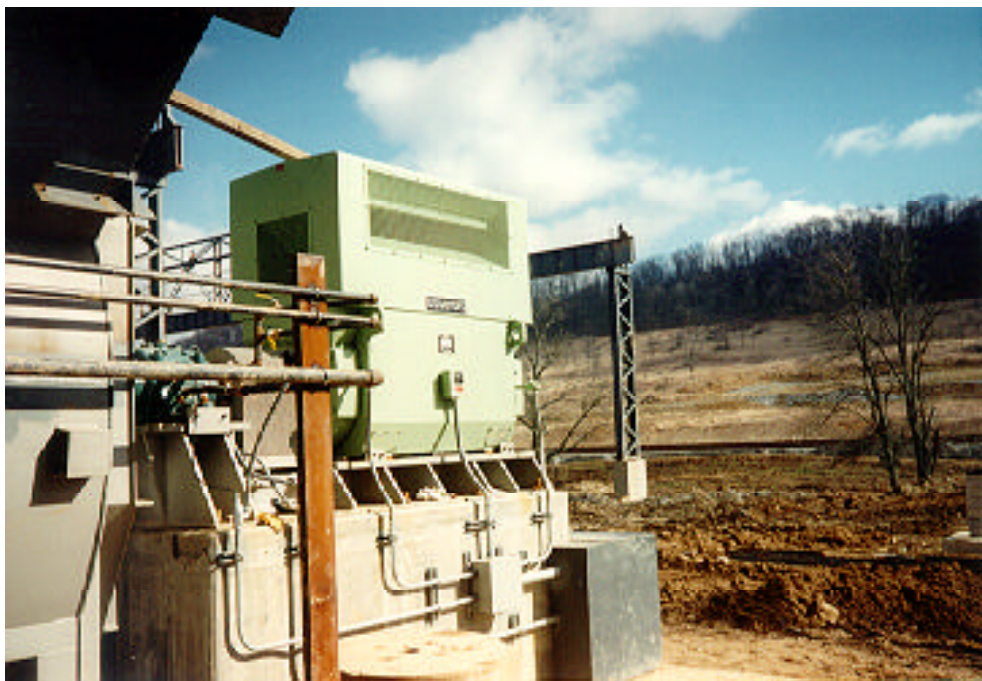
- **Stainless steel construction of reservoir, piping, tubing, fittings and hand valves**
- **Two reservoir sizes: 36 or 60 gallon**
- **Single or dual pumps with TEFC motors**
- **Standard factory run in Test**
- **Quick delivery**
- **Direct connected applications**



Product Overview: Pre-engineered Oil Consoles

US. Motors' long history in the supply of oil lubricated bearing arrangements now includes our new offering of LSC lube oil systems for heavy industrial service. Your requirements for flood lube sleeve bearing type motors can be further supported with flexible, pre-engineered lube oil systems built from stock components with short lead-times.

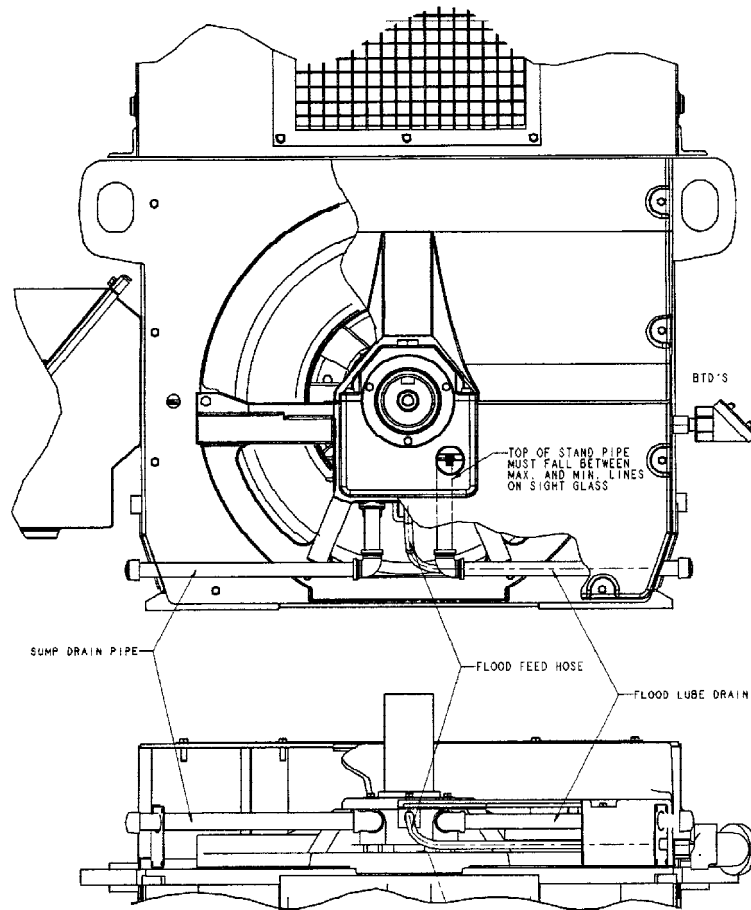
LSC lube oil consoles feature predominantly stainless steel construction which includes the reservoir (either 36 or 60 gallon), piping, tubing, fittings and hand valves. The standard brass shell, copper tube oil cooler is also available in an optional 316 stainless steel version. These are also adaptable to include pressure switches, temperature switch and a level switch as well as an immersion heater when required. You can also choose single or dual positive displacement gear pump(s) and single or dual spin on oil filters.



The LSC design also includes a three way valve for filter bypass or filter changeover, flanged connections for oil supply and return, three way back pressure regulator to adjust oil flow rate (factory preset) to motor bearings and large clean out doors on each end of the reservoir. Included as standard are connections for oil purifier and nitrogen or oil mist purge.

Additional Features

Your Titan® sleeve bearing motor can be configured for forced oil lubrication either as it is custom built in our factories or as a retrofit should your needs dictate later. The illustration below shows the typical bearing layout on a horizontal WPII motor.

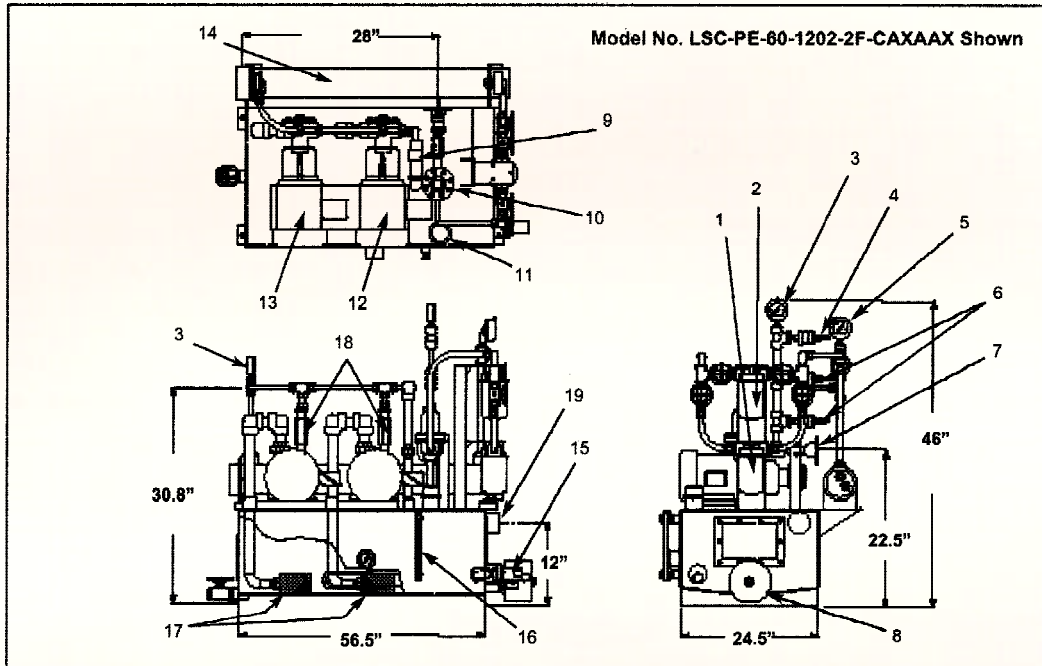


LSC pre-engineered lube oil systems offer you a simple solution built with high quality components and factory run tested for your greater peace of mind. Your package includes complete drawings, bill of materials and a full maintenance manual. So why not eliminate the time consuming search, lead-time delays and compatibility issues - request a quote for the motor and the lube oil system from USEM for your next requirement.

- ◆ System compatibility with your Titan motor.
- ◆ Configure your product features from stock parts.
- ◆ Stainless steel construction for critical components.
- ◆ Flexible design with quick delivery - typically 3 weeks.
- ◆ Upgrades can tie in motors, pumps, blowers and gear boxes.
- ◆ Domestically manufactured by LSC, a worldwide leader in lube oil systems.
- ◆ Nationwide warranty available by LSC field service.

Typical Layout of Dual Pump 60 Gallon System

LSC PRE-ENGINEERED LUBE OIL SYSTEMS



LEGEND

- 1 SPIN-ON OIL FILTER
- 2 AUX. SPIN-ON OIL FILTER
- 3 PRESSURE GAUGE
- 4 LOW PRESSURE SWITCH *
- 5 TEMPERATURE GAUGE
- 6 ADDITIONAL PRESSURE SWITCHES *
(2) FOR ALARM AND SHUTDOWN
- 7 OIL OUTLET
- 8 ELECTRIC IMMERSION OIL HEATER *
- 9 RELIEF VALVE
- 10 BY-PASS CONTROL VALVE

- 11 FILLER CAP w/ BREATHER
- 12 PUMP / MOTOR ASSEMBLY
- 13 AUX. PUMP / MOTOR ASSEMBLY *
- 14 WATER COOLED
HEAT EXCHANGER
- 15 LEVEL SWITCH *
- 16 LEVEL GAUGE
- 17 SUCTION SCREEN
- 18 CHECK VALVE
- 19 OIL RETURN
- * OPTIONAL FEATURES



Emerson Motors
8100 West Florissant Avenue, St. Louis, MO 63136
 WWW Home Page: <http://www.usmotors.com>



REGIONAL OFFICES
 DOMESTIC U.S. SALES
 INTERNATIONAL SALES
 MONTREAL, QUEBEC/CANADA
 TORONTO, ONTARIO/CANADA

PHONE	FAX
(888) 637-7333	(314) 553-1101
(314) 553-3185	(314) 553-2135
(800) 361-5509	(514) 332-5912
(905) 475-4670	(905) 475-4672

REGIONAL OFFICES
 MONTERREY, MEXICO
 CARACAS, VENEZUELA
 BOGOTA, COLOMBIA

PHONE	FAX
(52) 8-389-1312	(52) 8-389-1310
(58) 02-2377522	(58) 02-2329727
(57)1- 439-5420	(57)1- 439-5417