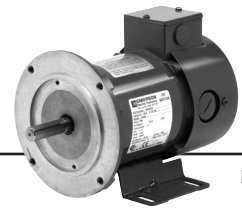


Direct Current Permanent Magnet



PM, SWD

APPLICATIONS:

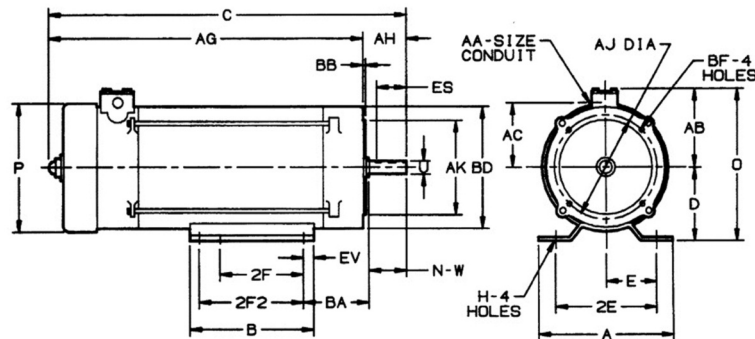
Designed for general industrial equipment including fans, blowers, compressors, pumps and direct connected equipment.

FEATURES:

- Totally Enclosed Fan Cooled / Totally Enclosed Non Vent
- NEMA[®] C-Face
- Removable Feet On Rigid Base Units
- 20:1 Constant Torque Speed Range
- 40°C Ambient
- Two Armature Leads & No Field Connections Are Required

HP	Base Speed	Top Speed	Frame	Armature Volts	Catalog Number	Type	List	Discount Symbol	Ship Wt. (lbs.)	Notes
1/4	1750	2050	56C	90	G636	PM	\$691	DS-4A	19	
1/3	1750	2050	56C	90	G637	PM	\$732	DS-4A	24	
1/2	1750	2050	56C	180	G641	PM	\$818	DS-4A	24	
	1750	2050	56C	90	G638	PM	\$818	DS-4A	23	
3/4	1750	2050	56C	180	G642	PM	\$992	DS-4A	27	
	1750	2050	56C	90	G639	PM	\$992	DS-4A	28	
1	1750	2050	56C	180	G643	PM	\$1,212	DS-4A	40	
	1750	2050	B56C	90	G640	PM	\$1,212	DS-4A	43	
1-1/2	1750	2050	145TC	180	G644	PM	\$2,301	DS-4A	50	

DC Motor Dimensions - Permanent Magnet Motor, Totally Enclosed Fan Cooled



A	D	E	2E	2F	H	N-W	U-0.0005	AA	AJ	AK	BA	BD	BF	ES MIN	SQ KEY
6-1/2	3-1/2	2-7/16	4-7/8	3	11/32	1-7/8	5/8	1/2	5-7/8	4-1/2	2-3/4	6-1/2	3-8/16	3/16	3/16

M/N	HP	ENCLOSURE	B	C	O	P*	AB	AC	AG	AH	BB	EV
G636	1/4	TEFC	3-15/16	10-15/16	7-1/2	5-1/2	4	3	8-7/8	2-3/32	5/32	15/32
G637	1/3	TEFC	3-15/16	11-29/32	7-1/2	5-1/2	4	3	9-27/32	2-3/32	5/32	15/32
G638	1/2	TEFC	3-15/16	11-29/32	7-1/2	5-1/2	4	3	9-27/32	2-3/32	5/32	15/32
G641	1/2	TEFC	3-15/16	11-29/32	7-1/2	5-1/2	4	3	9-27/32	2-3/32	5/32	15/32
G639	3/4	TEFC	3-15/16	13-3/32	7-1/2	5-1/2	4	3	11-1/32	2-3/32	5/32	15/32
G642	3/4	TEFC	3-15/16	13-3/32	7-1/2	5-1/2	4	3	11-1/32	2-3/32	5/32	15/32
G640	1	TEFC	4-1/32	14-7/16	8-3/4	6-3/32	5-1/4	3-27/32	12-3/8	2-1/16	1/8	1/2
G643	1	TEFC	4-1/32	14-7/16	8-3/4	6-3/32	5-1/4	3-27/32	12-3/8	2-1/16	1/8	1/2

D	E	2E	2F	2F2	U-0.0005	N-W	AA	AH	AJ	AK	BB	BD	BF	EV	SQ KEY
3-1/2	2-3/4	5-1/2	4	5	7/8	2-1/4	1/2	2-1/8	5-7/8	4-1/2	1/8	6-1/2	3-8/16	1/2	3/16

FRAME	M/N	HP	A	B	C	H	O	P	AB	AC	AG	BA	ES
143/145TC	G644	1-1/2	6-7/8	6-1/32	16-15/32	11/32	8-3/4	6-3/32	5-1/4	3-27/32	14-11/32	2-1/4	3-27/32

Dimension "D" will never be exceeded, but may vary from values shown.
When exact dimensions are required, shims up to 1/32" may be necessary.
All rough casting dimensions may vary by 1/4" due to casting variations.

*Largest motor width. All dimensions in inches.

† All marks shown within this document are properties of their respective owners.



GENERAL PURPOSE UNIMOUNT™
GENERAL PURPOSE HOSTILE DUTY
GENERAL PURPOSE CORRO-DUTY™
GENERAL PURPOSE 941 PLUS™
GENERAL PURPOSE e-LINE™
GENERAL PURPOSE OPEN DRIPPROOF
GENERAL PURPOSE HAZARDOUS LOCATION
GENERAL PURPOSE AUTOMOTIVE DUTY
COOLING TOWER DUTY
HAZARDOUS LOCATION
C-FACE MOTORS
VARIABLE FREQUENCY